

Report of new cultivar

## “Reysa”, new cuban cultivar of potato

Jorge L. Salomón-Díaz<sup>1\*</sup>

Juan G. Castillo-Hernández<sup>1</sup>

Beatriz Araujo<sup>1</sup>

Odalís Céspedes<sup>1</sup>

<sup>1</sup>Instituto Nacional de Ciencias Agrícolas (INCA), carretera San José-Tapaste, km 3½, Gavieta Postal 1, San José de las Lajas, Mayabeque, Cuba. CP 32 700

\*Author for correspondence. [salomon@inca.edu.cu](mailto:salomon@inca.edu.cu)

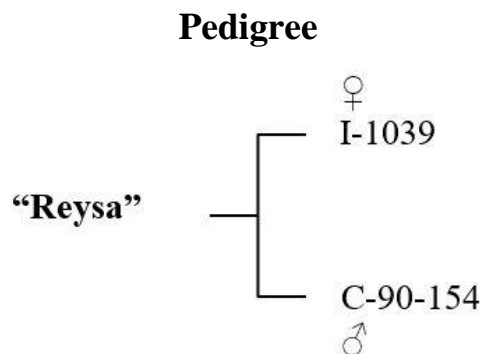
### ABSTRACT

Thousands of potato cultivars have been reported worldwide. In Cuba, a new potato cultivar was selected and named “Reysa”, originated from a cross between the I-1039 and C-90-154 clones, the progeny consisting of 200 botanical seeds came from the International Potato Center in Peru, they were subjected to selection for 13 years in the Program of Genetic Improvement of the National Institute of Agricultural Sciences. Various morphoagronomic characters were from the hybrid family stage evaluated and as clone 9-12-05. This clone was in the following clonal generations selected for its appropriate field behavior and desired morpho-agronomic characters, its performance ranged between 30 and 40 t ha<sup>-1</sup>, as well as its good behavior before the main pests and diseases in field conditions.

**Key words:** improvement, diseases, performance, selection

### Origin

In 2005, 200 botanical potato seeds from the crossing made with parents I-1039 and C-90-154 were received at INCA of the International Potato Center (CIP) of Peru. After 13 years (2005-2018) of evaluation and selection of clone 9-12-05, by the Cuban Genetic Improvement Scheme, the new potato cultivar “Reysa” is proposed. (Figure 1)



**Figure 1.** New potato cultivar “Reysa”

### **Description of the characters of cultivar of potato “Reysa”**

Number of leaflets: 5

Leaflet shape: Asymmetric

Plant height: 40-45 cm

Presence of anthocyanin in the stem: Yes

Number of stems per seedling: 2-3

Flower color: white

Shape of the leaves: open

Field closure: good (45 days)

Vegetative cycle: short (90 days)

Number of tubers per plant: 6 to 10

Yield per hectare (t ha<sup>-1</sup>): 30 to 41 (high)

Tuber skin color: yellow

Tuber shape: round

Eye Depth: Medium

Tuber uniformity: medium to large

Appearance: good

Color of tuber mass: yellow

Dry matter (%): 17

*Alternaria solani*: resistant (grade 3 in field conditions) on the 9 degree scale

*Phytophthora infestans*: moderately resistant (25 % of the foliage affected in field conditions)

*Streptomyces scabies*: resistant (grade 1) on the 6 degree scale

Virus PLRV: tolerant (0.5 affected plants in field conditions)

Table 1 shows the yield per hectare and number of tubers obtained during eight agricultural campaigns.

**Table 1.** Yield per hectares and number of tubers per plant obtained for the cultivar “Reysa”, during eight agricultural campaigns

Campaign/Locality	INCA	
	Yield (t ha <sup>-1</sup> )	Number of tubers per plant
2009-2010	40.5	7.1
2010-2011	33.3	6.2
2011-2012	33.7	6.5
2012-2013	35.4	7.2
2013-2014	31.1	6.7
2014-2015	32.4	7.1
2015-2016	32.3	6.8
2016-2017	30.5	6.1
2017-2018	41.1	10.0
<b>Mean</b>	<b>33.5</b>	<b>7.3</b>